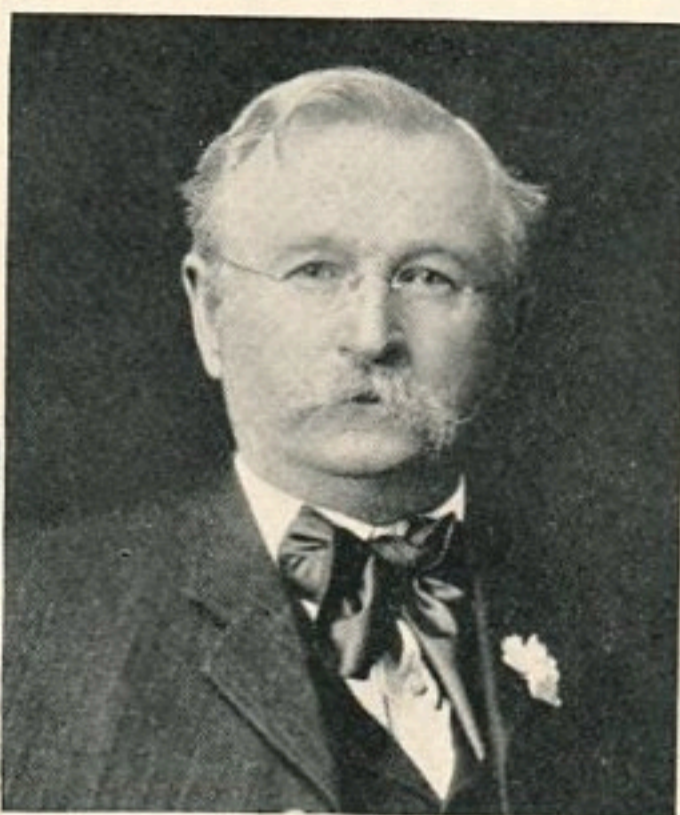


BEHIND AO TRIAL SETS ARE FORTY YEARS OF RESEARCH



Dr. Edgar D. Tillyer



George W. Wells



Dr. Charles F. Prentice

AO's Work on Trial Lenses Has Meant Much to Refraction

AFTER all, nothing is more important to a refractionist than his trial set. It is the basis of his professional reputation; his means of providing his patients with accurate Rx lenses. All in all, a trial set is a refractionist's "court of final appeal" in eye examination work.

The American Optical Company has long recognized the importance of trial lenses and has been experimenting for more than half a century on trial sets. Up to 1890, American-made trial sets were not considered to be of great importance in refraction. The professional men prided themselves on their "imported" sets.

About this time, George W. Wells, late president of the American Optical Company and one of the most enthusiastic proponents of better, more comprehensive trial sets engaged Dr. Charles F. Prentice, noted optical scientist, to make a special study of trial lenses. Thus, before 1899 AOC Co. in collaboration with Dr. Prentice, developed a trial set with bi-concave and bi-convex lenses which exactly neutralized each other. Although

made over thirty years ago, the spheres in these sets were effective power!

Some time later the need for establishing a better fixed standard for trial lenses became apparent. With the co-operation of the United States Bureau of Standards, American Optical Company made three master trial sets with a lens range of .12D to .20D, one of which was measured and certified, and thereafter became the A O primary standard set used as the basis for all A O measurements of lens power.

In 1926, American Optical Company introduced its foremost advance in trial sets—The Tillyer Trial Set, the result of twelve years of continuous research by Dr. Edgar D. Tillyer, Chief of the A O Research Division. The outstanding advantage of the Tillyer set is its additive accuracy which permits final Rx readings which are exact and final. The difference between the Tillyer trial set and ordinary trial sets is that the Tillyer reads exact effective power even though sphere and cylinder lenses are used in combination. In other words, it eliminates so-called allowances.

Thus, through these improvements and during a period of forty years, A O has led in the development and distribution of trial sets that help you give your patients the most comfortable correction for their eyes.